

Roll No. ....

## BCA-501(N)

### B. C. A. (Fifth Semester) EXAMINATION, Dec., 2017

(New Course)

Paper First

#### INTRODUCTION TO DBMS

Time : Three Hours ] [ Maximum Marks : 75

Note : Attempt questions from all Sections as directed.

Inst. : The candidates are required to answer only in serial order. If there are many parts of a question, answer them in continuation.

#### Section—A

##### (Short Answer Type Questions)

Note : All questions are compulsory. Each question carries 3 marks.

1. (A) Discuss the mechanism used to read data from or write data to the disk.
- (B) Discuss the techniques for record deletion.
- (C) What is the two-phase locking protocol ?

- (D) What is meant by the concurrent execution of database transaction in a multiuser system ?
- (E) List the types of privileges available in SQL.
- (F) What is meant by revoking a privilege ?
- (G) What is a functional dependency ? Why can we not infer a FD automatically from a particular relation state ?
- (H) List the data types that are allowed for SQL attributes. http://csjmuonline.com
- (I) Discuss the entity integrity and referential integrity constraints. Why is each considered important ?

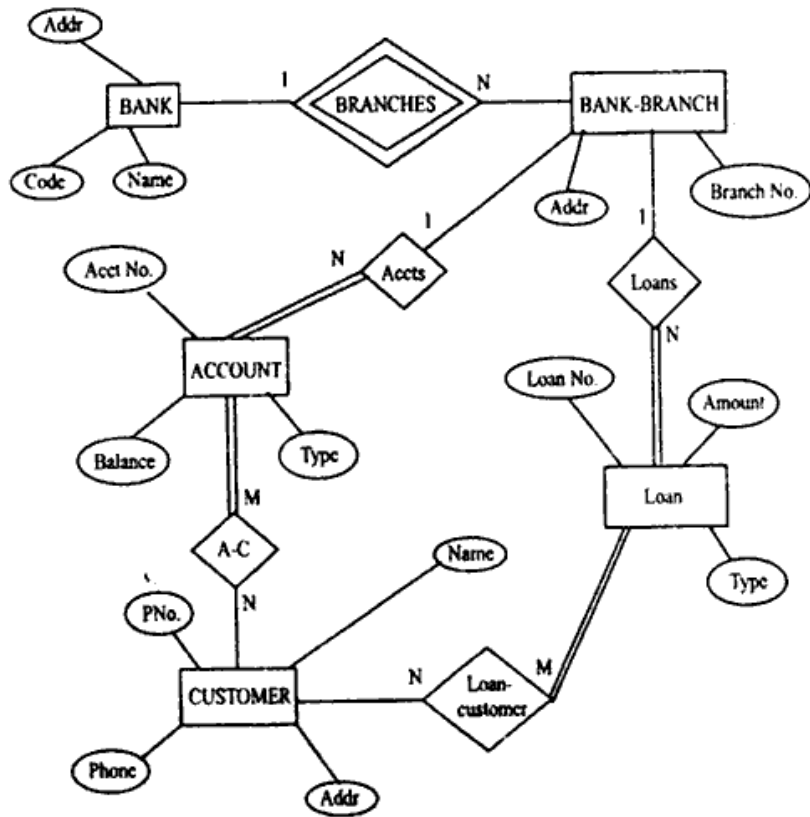
#### Section—B

##### (Long Answer Type Questions)

Note : Attempt any two questions. Each question carries 12 marks.

2. Consider the ER diagram shown in figure for part of a bank database. Each bank can have multiple branches and each branch can have multiple accounts and loans.
  - (a) List the (non weak) entity types in the ER diagram.
  - (b) Is there a weak entity type ? If so, give its name, partial key and identifying relationship.
  - (c) List concisely the user requirements that led to this ER schema design.

(d) List the names of all relationship types :



- Describe the three-schema architecture. Why do we need mapping between schema levels? How do different schema definition language support this architecture?
- Discuss the capabilities that should be provided by a DBMS. What are the responsibilities of the DBA and the database designers?

5. Consider the following relations for a database that keep track of business trips of salespersons in a sales office.

SALESPERSON (Sid, Name, Start-Year, Dept\_No)

TRIP (Sid, From\_City, To\_City, Departure\_Date, Return\_Date, Trip-ID)

EXPENSE (Trip-ID, Account #, Amount)

Specify the foreign keys for this schema, stating any assumption you make.

**Section—C**

**(Long Answer Type Questions)**

**Note :** Attempt any two questions. Each question carries 12 marks. http://csjmuonline.com

- Consider the following database relation containing the attributes Book\_Id, subject\_category\_of\_book, Name\_of\_author and nationality\_of\_author with book\_id as the primary key :
  - What is the highest normal form satisfied by this relation?
  - Suppose the attributes books\_title and author-address are added to the relation, and the primary Key is changed to {name-of-author, Book-title}. What will be the highest normal form satisfied by relation?
- (a) What is the difference between static and dynamic files?

- (b) How does B-tree differ from a  $B^+$  tree ? Why is a  $B^+$  tree usually preferred as an access structure to a data file ?
8. What is pseudo code of searching for a record with search key field value K, using a  $B^+$  tree in any preferred programming language ?
9. What are the typical security classification ? Discuss the simple security property and the \* property and explain the justification behind these rules for enforcing multilevel security.

http://csjmuonline.com

Whatsapp @ 9300930012

Your old paper & get 10/-

पुराने पेपर्स भेजे और 10 रुपये पायें,

Paytm or Google Pay से

BCA-501(N)

2,300